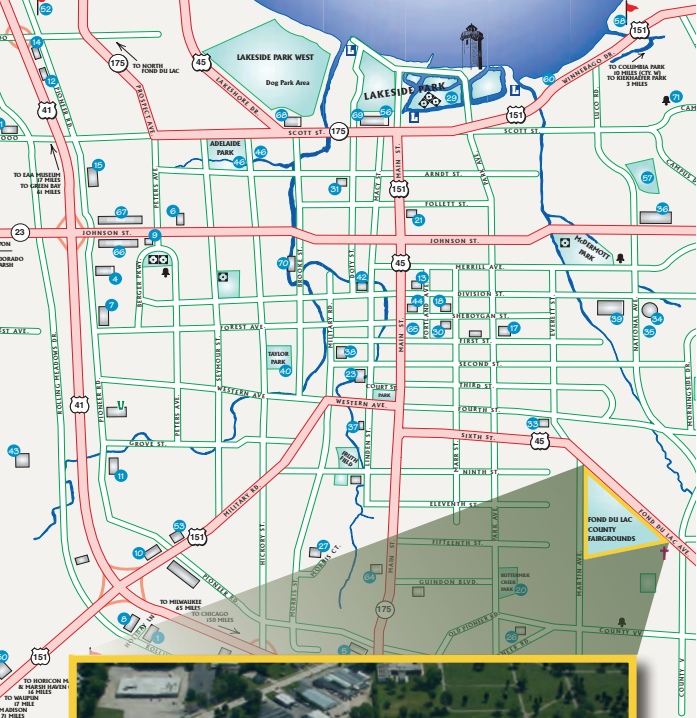


Fond du Lac County Fairgrounds



CAMPING

The Fond du Lac County Fairgrounds is licensed for up to 199 sites – 18 with full hook-up that includes water, sewer and electricity; some sites with electricity hook-up only; the balance is primitive sites.



Fond du Lac County Fairgrounds
160 S. Macy Street
Fond du Lac, WI 54935



www.fdlco.wi.gov
www.fdlcountyparks.com

Location:

520 Fond du Lac Avenue
Fond du Lac, WI 54935
920-929-3169
fairgrounds@fdlco.wi.gov

Mailing Address:

160 S. Macy Street
Fond du Lac, WI 54935

Fond du Lac County Fairgrounds

A Multipurpose Facility

The Fairgrounds is situated on 75 acres and features over 60,000 square feet of exhibit space. It is a multipurpose facility designed for trade shows, craft shows, flea markets, dog shows, livestock events, horse shows, RV rallies, concerts, car shows, and much more.

It is the Fairgrounds' mission to provide the best possible site for various types of events and recreational activities, which will, in turn, help promote Fond du Lac County and have a greater economic impact on the community.

The Fond du Lac County Fairgrounds is also home to the Fond du Lac County Fair, the Fairgrounds Aquatic Center, the Blue Line Hockey facility, the American Legion, and the Army Reserve.

SHELTER



GRANDSTAND



Facilities also include:

- Park area with playground equipment and 2 shelter rentals with electricity, picnic tables and grills
- Horseshoe courts
- Grandstand seating for over 2,800 and open area for 10,000; electrical hookups, concession stand
- Abundant parking



EXPO CENTER - 120' X 250'

28,000 usable sq. ft. with a capacity of 1,837; includes 3 meeting rooms; full kitchen/concession stand; restrooms with shower; 4-18' high overhead doors; sound system; HVAC; wireless WiFi; smoke-free environment; tables, chairs and stage available; handicap accessible



RECREATION CENTER 100' X 210'

21,000 usable sq. ft. with a capacity of 1,400; includes meeting rooms/office space; full kitchen/concession stand; restrooms, showers and locker rooms; sound system; HVAC; wireless WiFi; smoke-free environment; tables, chairs and stage available; handicap accessible



COW PALACE - 100' X 100'

8,500 sq. ft. with a capacity of 636; includes refrigerator/counter/concession stand; restrooms; permanent stage; sound system; heated; wireless WiFi; smoke-free environment; tables and chairs available; handicap accessible



HORSE ARENA/BARN 100' X 200' 60' X 200'

Arena: 100' x 200' with announcer stand & PA system; warm-up area 80' x 100'.
Barn: 60' x 200' with 80 stalls, ceiling fans and a wash area

CATTLE BARNS

Bldg. B: 70' x 200'; Bldg. C: 70' x 170';
Bldg. D: 100' x 140'; Milkhouse available