

Shelter In Place

Recommended Items for a Shelter In Place Kit:

You should gather these items together in a box to have ready for any emergency:

- Pre-cut, labeled, plastic for windows and vents
- Duct Tape
- Towels for under doors
- Radio, flashlight, and extra batteries
- First Aid Kit that includes prescription medications and toiletries.
- Non-perishable food, and bottled water
- "Sheltering In Place" sign



Do you own a NOAA

National Oceanic Atmospheric Administration

All Hazards Radio?

Besides severe weather information, hazardous material spill information can be heard 24 hours a day on an all hazards radio.

Fond du Lac County SAME Code:
055039



For further information to assist in your planning needs prior to an emergency contact
Fond du Lac County
Emergency
Management

City/County Government Center
160 S. Macy St.
Fond du Lac, WI 54935

Phone: 920-929-2911

Fax: 920-929-2912

E-mail: 911emergencymanagement@fdlco.wi.us

Website: www.fdlco.wi.gov

Tune into your local emergency broadcasting station for important information in the event of any emergency/disaster.



SHELTER IN PLACE

What to do during a chemical emergency



Guidelines
for the
Fond du Lac
County Area

This information brought to you by the Local Emergency Planning Committee (LEPC)

Shelter In Place-Be Prepared!

What is Shelter In Place?

Shelter In Place means to take shelter where you are, remaining inside your home, work-place or a nearby building. You may need to Shelter In Place when:

- ✓The emergency or chemical leak/spill is of short duration
- ✓The danger could quickly overtake you if you were outside
- ✓There is not enough time to evacuate

How will I know that I should

Shelter In Place?

Fond du Lac County utilizes various methods to make emergency notifications to the public which could include: outdoor sirens, door-to-door notifications, NWS, NOAA radio, print and broadcast media. Emergency notifications giving Shelter In Place guidance will utilize one of, or a combination of these tools to alert the public of danger.

Also take action if you:

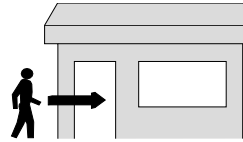
- ◆Hear a strange sound like an explosion.
- ◆See a vapor cloud.
- ◆Smell a strange odor.
- ◆Feel nauseous or have burning eyes.

How will I know what to do?

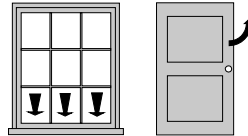
If you hear the warning sirens, or sense danger, immediately go inside and tune to your local radio or TV station.

Shelter In Place Means...

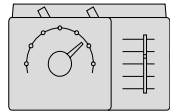
1. Move inside a building.



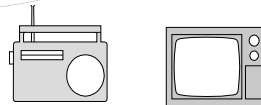
2. Close all windows and doors



3. Turn off all ventilation systems
(Includes heating and AC)



4. Listen to your local radio or TV



DO NOT...

- DO NOT use the telephone; do not call 911.
- DO NOT go outside to investigate.
- DO NOT go to get your children from school- they will be safe there.

During Chemical Emergencies...



In a Structure:

- ◆Go indoors immediately. (Pets too!) Seal your home tightly by closing and locking all windows and doors.
- ◆Put a "Sheltering In Place" sign in your front window, to alert officials you are home and safe.
- ◆Turn off forced air heating, cooling and ventilation systems, including window and attic fans and anything that moves air in and out of the house. Close fireplace dampers.
- ◆Go into a room, preferably one with no or few windows. Seal all doors, windows, vents and outlets with plastic and duct tape. Place a wet towel at the bottom of the doors to absorb gases that may leak into the house.
- ◆Listen to a local radio or TV station. You will be given important information and then notified when the emergency is over. (Use a battery-powered radio if the power is off.)
- ◆When you are told the area is safe, ventilating your place of shelter may be recommended by opening all doors and windows, airing out the building in case a small amount of the chemical has seeped in.

In a Vehicle:

Close all windows and shut all manual vents. Turn off the ventilation system. Turn on the radio for emergency information.

Caught Outside:

Stay upstream, uphill, and upwind! In general, try to go at least 1/2 mile (8-10 city blocks) from the danger area. Move away from the accident scene. Cover your mouth with a cloth while leaving the area.

Child Safety in School...

Attempting to pick up children from school during severe weather or a chemical emergency can be dangerous. You and your children could be exposed to the hazards while traveling to and from school. It is safer to **leave your children at school** where they will be instructed to follow the school's safety procedures until the danger has passed.

