



***/Venture/Architects***

*Justice Planning and Design*

212 North 25<sup>th</sup> Street, Milwaukee, WI 53233

414.271.3359

# Fond du Lac County

Sheriff's Office & Jail

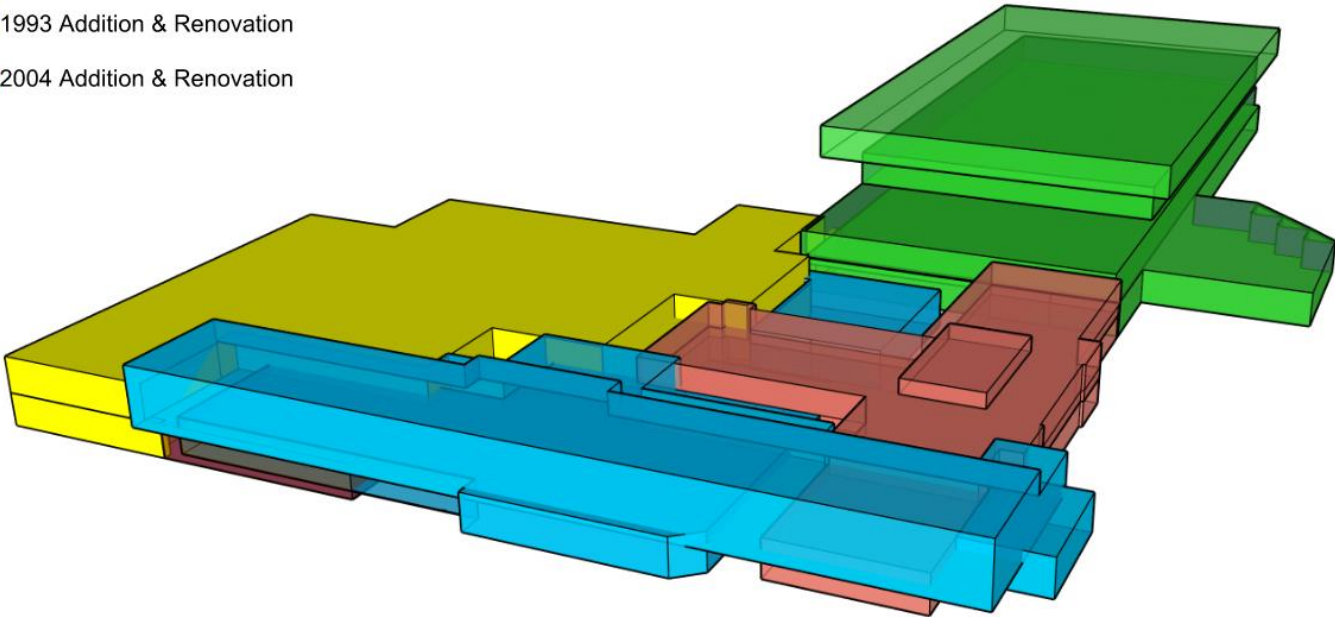
A D H O C Committee Presentation

July 23, 2024

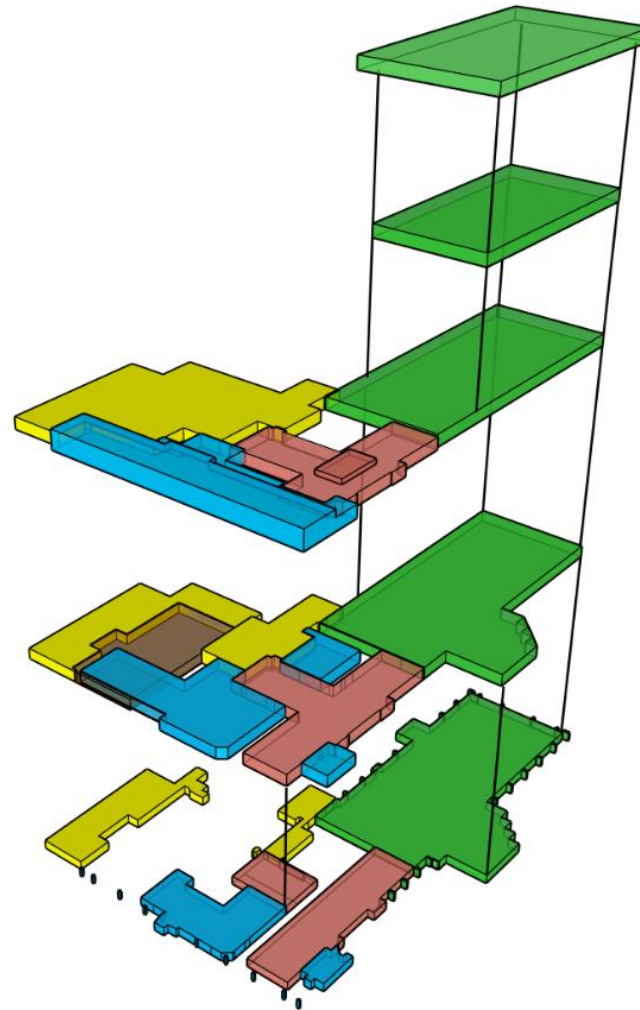
# EXISTING FACILITY

## LEGEND

- 1954 Safety Building
- Social Services Building  
(Built prior to 1979)
- 1979 Admin. Building
- 1993 Addition & Renovation
- 2004 Addition & Renovation



# 1. THE NEED FOR A NEW FACILITY.



## LEGEND

- 1954 Safety Building
- Social Services Building (Built prior to 1979)
- 1979 Admin. Building
- 1993 Addition & Renovation
- 2004 Addition & Renovation

- **Existing Building Assessment Study**

The existing Jail and Sheriff's Office were built in 1954 (70 years old), the average lifespan for a facility of this type ranges from 35-50 years. Based on this assessment study, the existing Jail and Sheriff's Office have exceeded their useful life.

- **Existing Building Assessment Study Categories:**

- Major Safety Issues
- Major Operational Issues
- Major Department of Corrections (DOC) Deficiencies
- Major Physical Building Conditions & Building Code Deficiencies
- Major Mechanical, Electrical, and Plumbing Deficiencies
- Financial Burden: Cost to maintain current facility operations vs. cost of a new facility

# EXISTING BUILDING ASSESSMENT

## Major Site Issues:



Flooding

# EXISTING BUILDING ASSESSMENT

## Major Site Issues:



Flooding

# EXISTING BUILDING ASSESSMENT

## Major Safety Issues:



Time-Out Corridor  
-Electrical Cord Across Floor



Safety/Security Concern

# EXISTING BUILDING ASSESSMENT

## Major Safety Issues:



Corridor



Corridor

# EXISTING BUILDING ASSESSMENT

## Major Safety Issues:



Time-Out Cell



Time-Out Cell

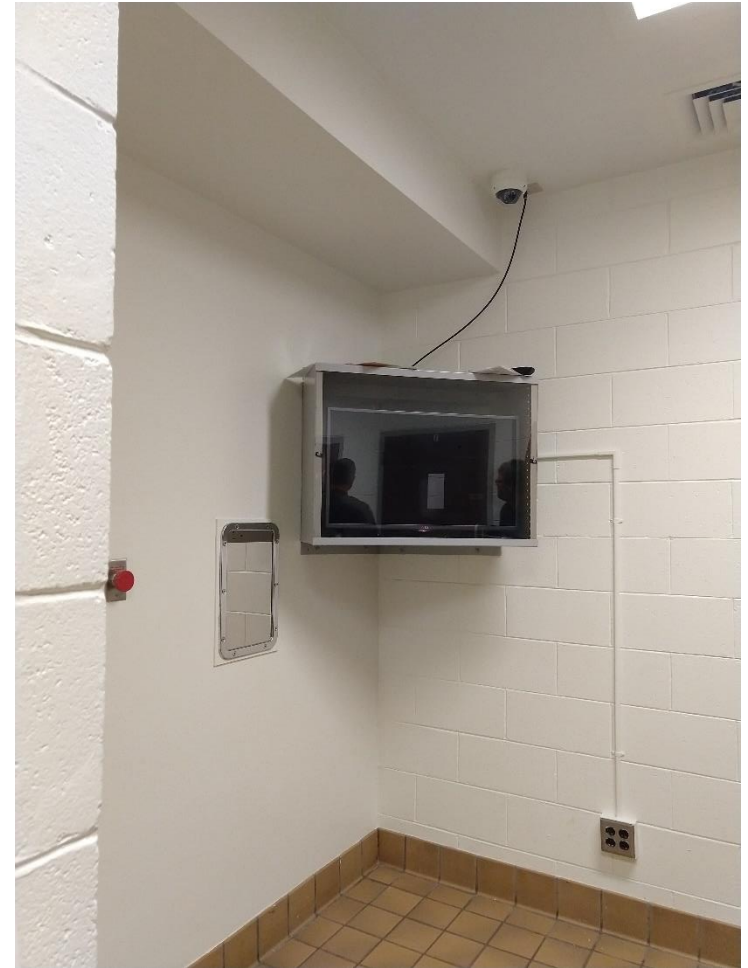
# EXISTING BUILDING ASSESSMENT

## Major Safety Issues:



Officer's Station

- No Direct Visibility into Housing



Dayroom

- Safety/Security Concern

## Major Operational Issues:



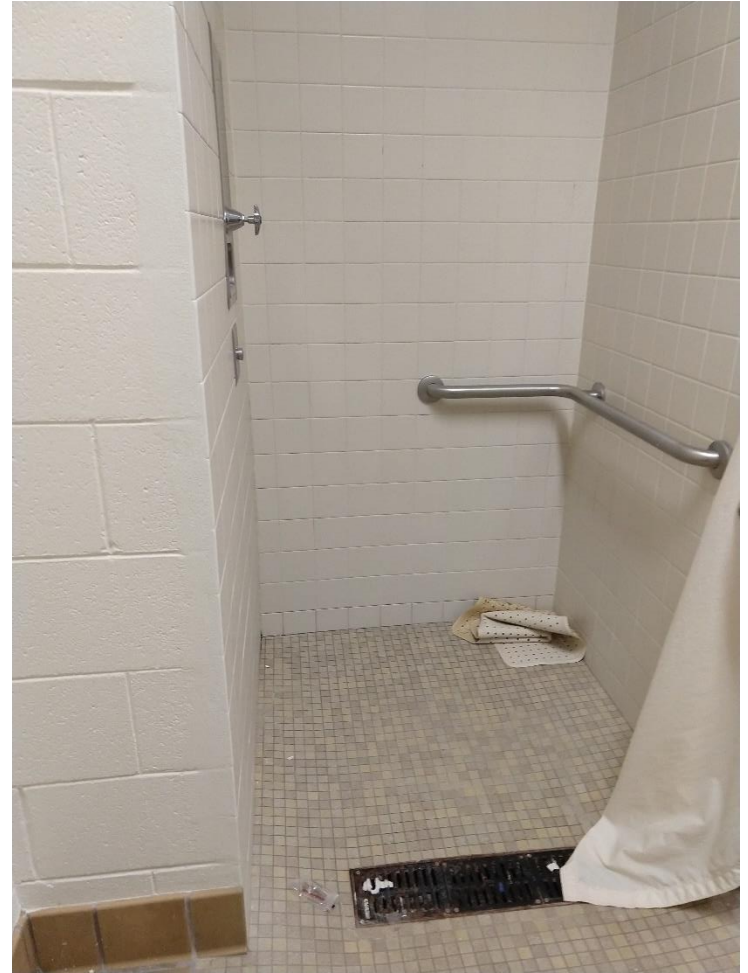
Receiving – Blocks Traffic

# EXISTING BUILDING ASSESSMENT

## Major DOC 350 Deficiencies:



Dayroom Front  
- Self-Harm Concern



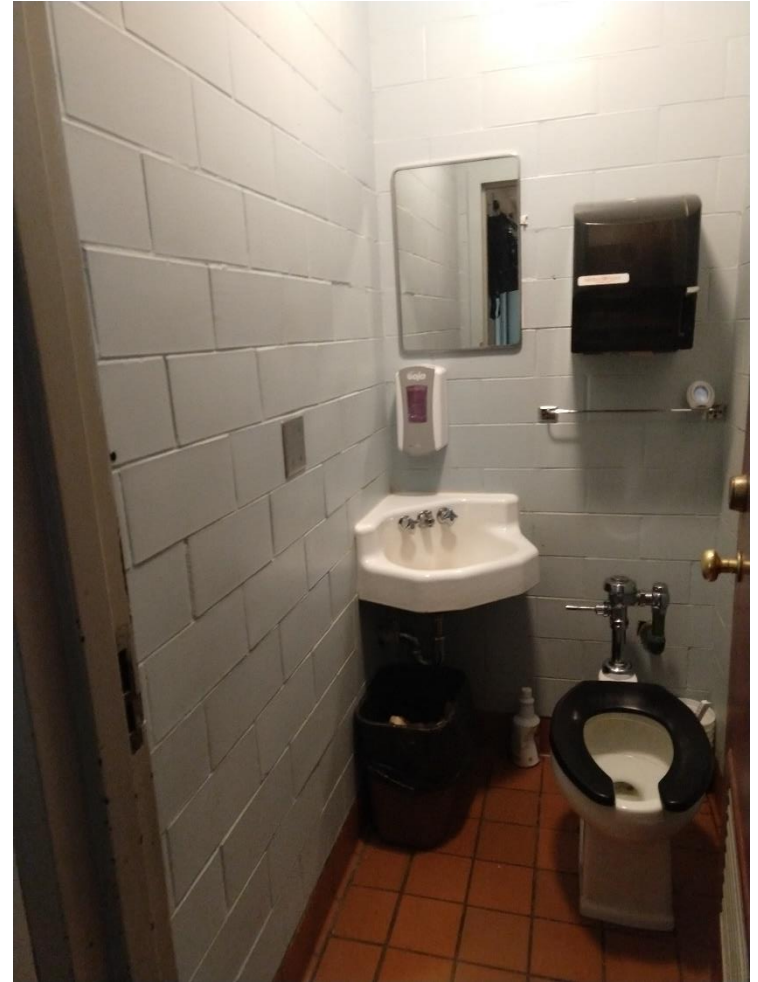
Tie-Offs at Grab Bars

# EXISTING BUILDING ASSESSMENT

## Major Building and Building Code (IBC 2015) Deficiencies :



Detainee Toilet/Shower  
- Not Code Compliant



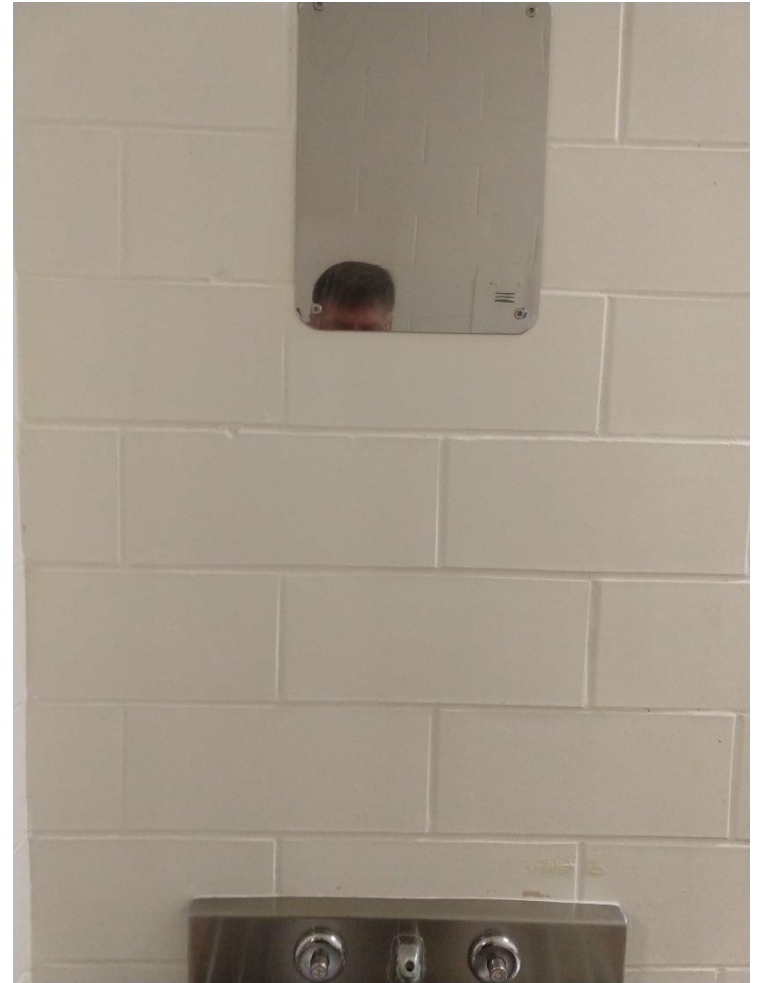
Officer's Station  
- Not Code Compliant

# EXISTING BUILDING ASSESSMENT

## Major Building and Building Code (IBC 2015) Deficiencies :



Door Not Compliant  
-Door Width



Detainee Toilet Area  
-Not Accessible

## Major Building Issues:



New Jail Addition -  
Unsettling



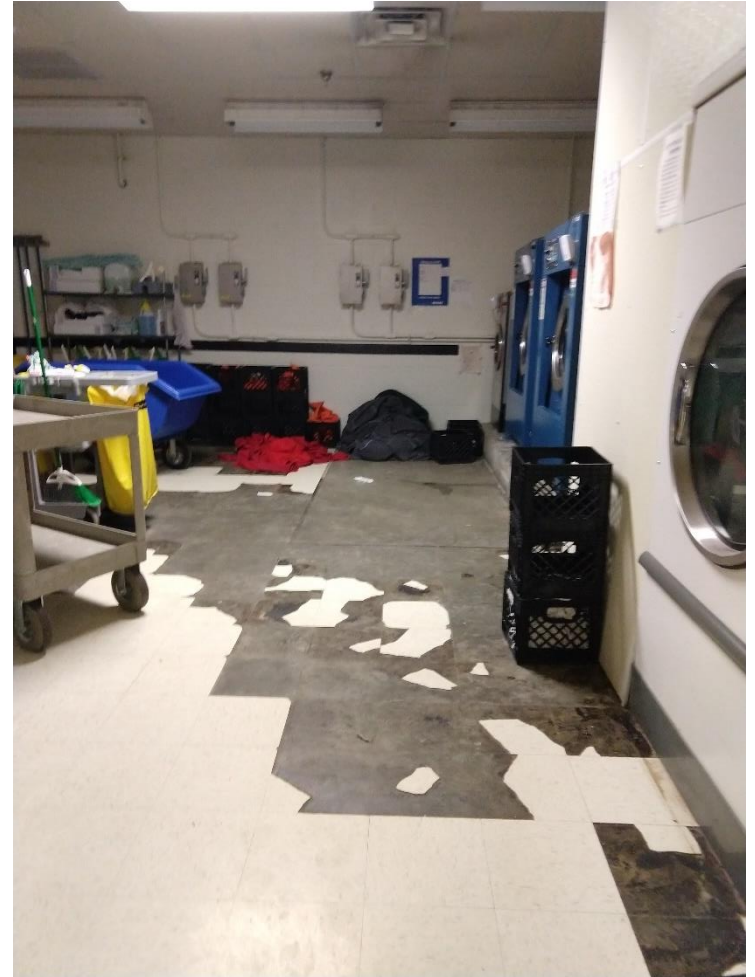
New Jail Addition -  
Unsettling

# EXISTING BUILDING ASSESSMENT

## Major Mechanical, Electrical, Plumbing Deficiencies:



Jail – Security Electronics  
- Not in a conditional space



Jail Laundry

# EXISTING BUILDING ASSESSMENT

## Major Mechanical, Electrical, Plumbing Deficiencies:



Plumbing – Pipe Breaking



Plumbing – Pipe Breaking

# EXISTING BUILDING ASSESSMENT

## Major Safety / Security Issues:

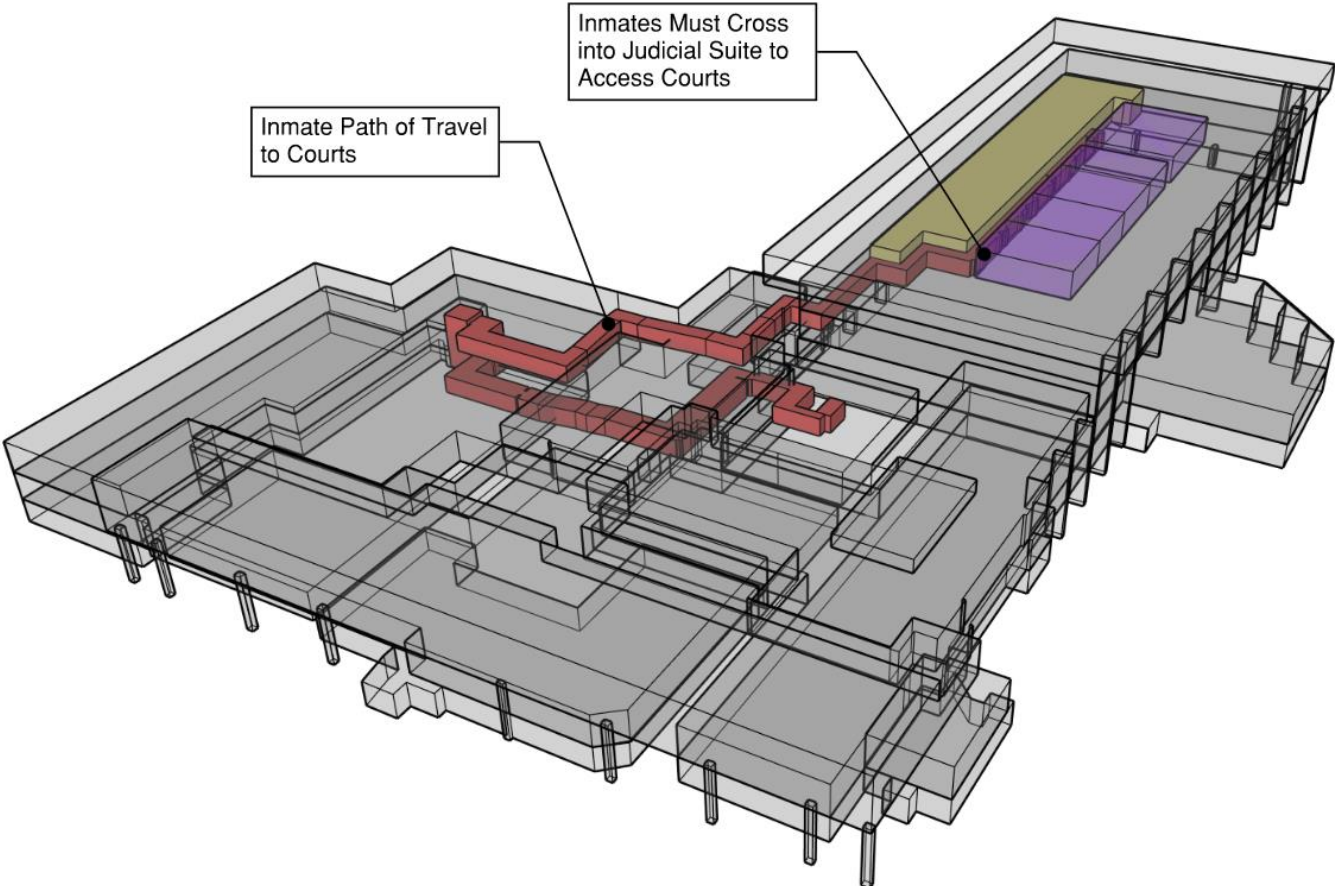


Ramps Through-Out Jail



Corridor to Courts

# EXISTING BUILDING ASSESSMENT



## Physical Condition of the Court Functions

- No secure court holding
- No secure transport corridor – escorted thru Judges Suite
- Windows to Jury Rooms – vulnerable
- Lack of Jury Rooms
- Courtrooms too small – except one